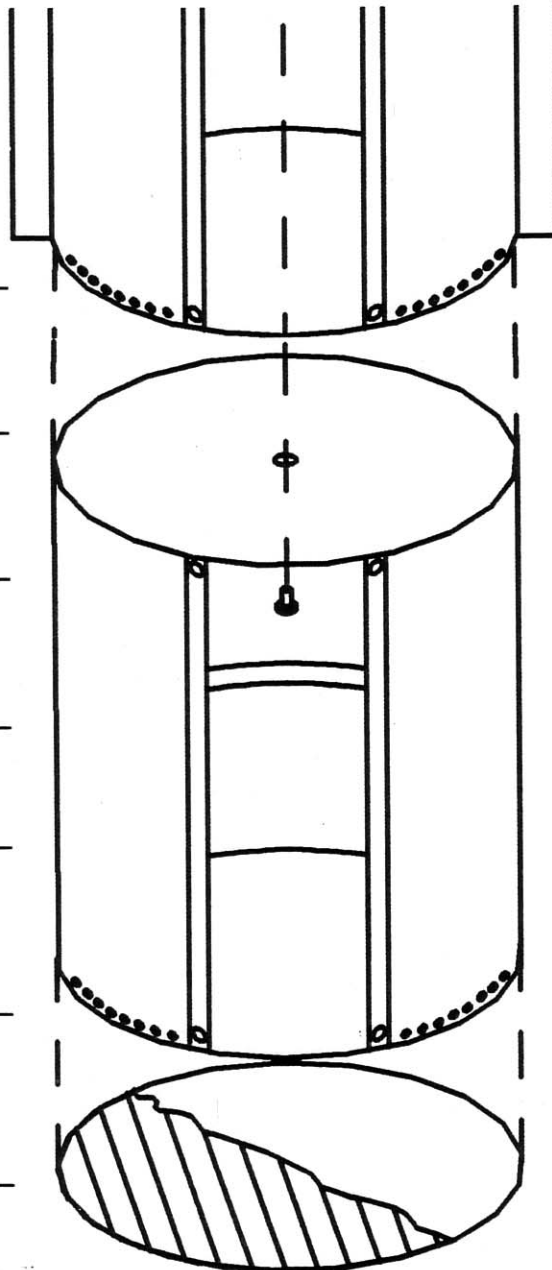


ASSEMBLY



AND DISASSEMBLY
OF A B S

ESECO *Speedmatic*®
REVOLVING DARKROOM DOORS



ASSEMBLY OF SPEEDMATIC ABS REVOLVING DARKROOM DOOR

Step #1

Lay large ABS panel portion (marked inside cylinder) on floor with marked side down.

Step #2

Stand rings 1B and 2B on ABS panel. Start where indicated by "Start". Use two (2) long screws in first and last hole. All those in between are short screws. Use Awl to line up holes.

Step #3

Insert Riv nuts in each handrail hole from outside of inner drum. Put each of the #10-32 screws 1 1/4" long through the holes in the handrail, then through long black plastic spacers and into each riv nut. Use 2 self tapping screws to attach ends of handrail from outside inwards

Step #4

Insert each of the eight plastic spacers into square aluminum channel tube on outside panels and align with hole.

Step #5

Stand the inside cylinder onto the wood platform of (1A) and place the top of (2A) on top of drum. Wrap ABS outer panel around inside cylinder. Start as indicated with 4 bolts on top, 4 bolts bottom, and the short screws in between.

Step #6

Insert the 1/2"x3" bolt up through the inside of the hole in the top of the inner cylinder then up through the suspension bearing and put the 1/2" jam nut on top. Adjust so inside cylinder turns freely.

Step #7

Attach left side rail at top of J channel with screw. Letting side rail hang attach right side rail the same way. Put screws in bottom hole of side rail into bottom of door. Put remaining screws in from inside door to the out side.

DISASSEMBLY OF SPEEDMATIC ABS REVOLVING DOOR

NOTE:
THIS PROCEDURE REQUIRES TWO
PEOPLE. THEY WILL NEED TO USE A 3/4"
WRENCH

Step #1

Remove the 1/2" locking nut from the top of the suspension brace assembly. This will allow the 1/2" x 3" Suspension Bolt to be removed from the inside of the door cylinder.

Step #2

Using a #19 drill bit, take out the black rivets holding the outside ABS panel assemblies around the top and bottom of outside drum.

Step #3

Drill out rivets holding side rails and J bar together, also at the bottom ring.

Step #4

Remove eight 1/4" x 1 1/4" screws from the four square aluminum channel felt seal assemblies. Remove outside ABS panel and top.

Step #5

Drill out the rivets holding side rails and top J bar together.

Step #6

Remove hand rail and the black spacers from the inside cylinder. Drill out 2 rivets on ends of handrail.

Step #7

Lift the inside cylinder assembly off of the door base and lay the cylinder on its side.

Step #8

With the inside cylinder laying on its side use a #19 drill bit to remove the rivets from around top and bottom.

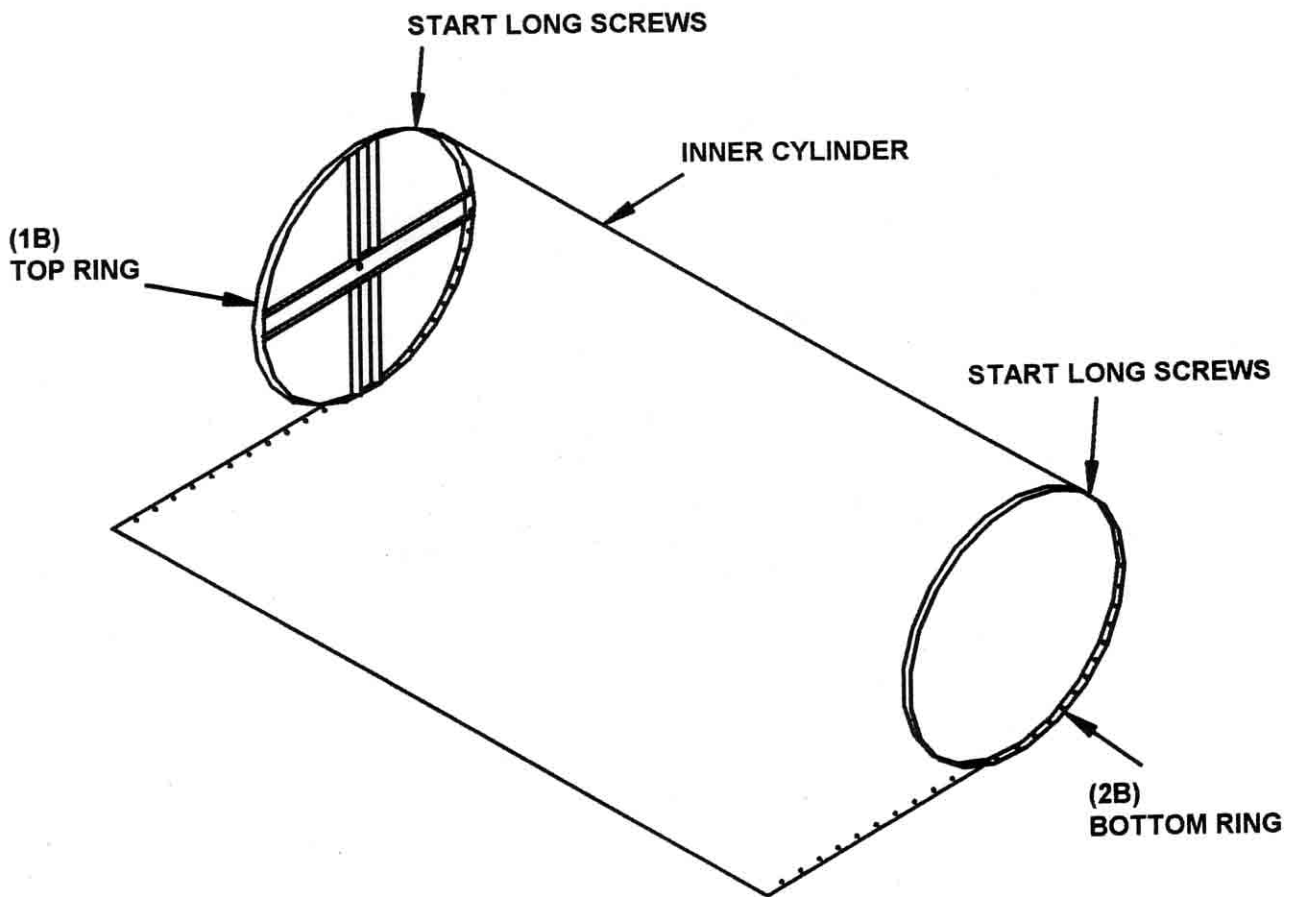
Step #9

Remove the inside cylinder top assembly and bottom ring. The door is now ready to be moved and reassembled.

**NOTE-BE CERTAIN NOT TO MISPLACE
THE EIGHT SPACERS THAT INSERT IN THE
ALUMINUM CHANNEL.**

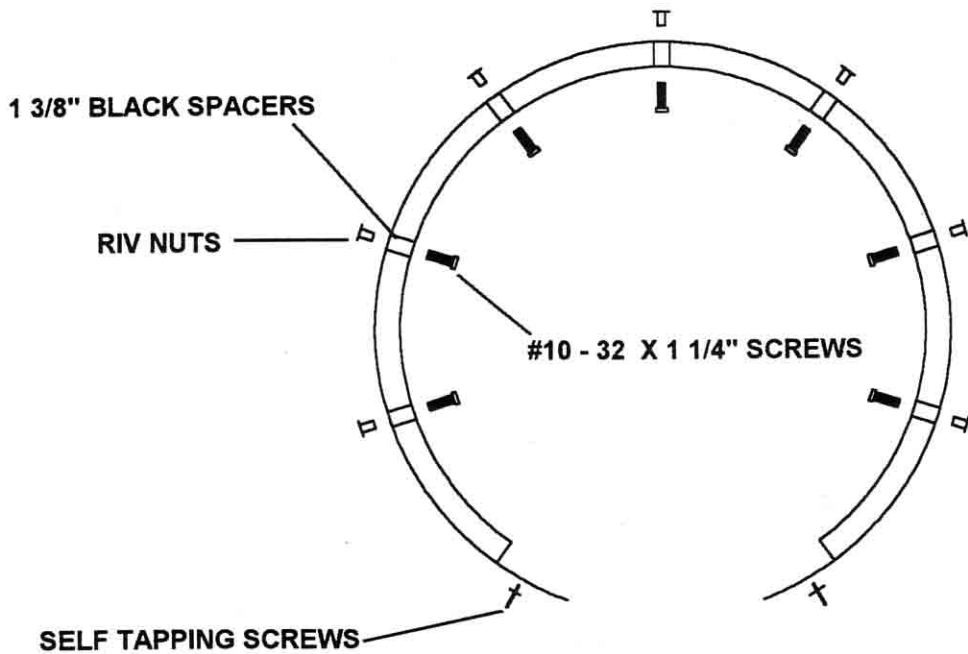
Step #1

Lay large ABS panel portion (marked inside cylinder) on floor with marked side down.



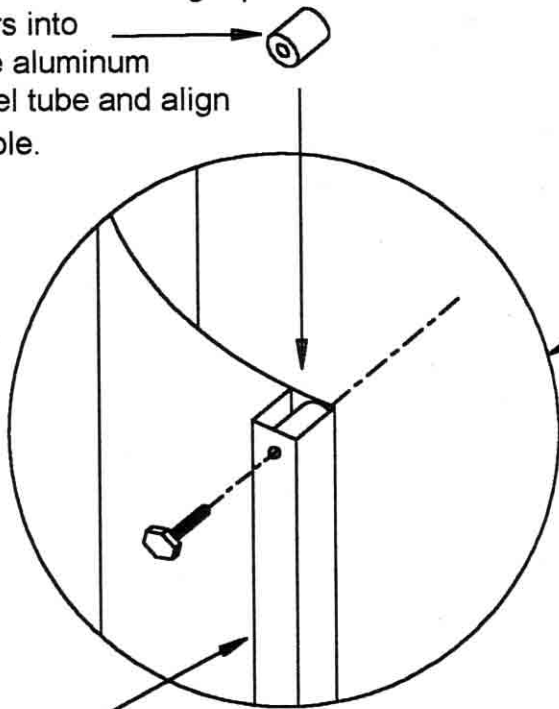
Step #2

Stand rings 1B and 2B on ABS panel. Start where indicated by "Start".
Use two (2) long screws in first and last hole.
The screws in between are short. Use Awl to line up holes.



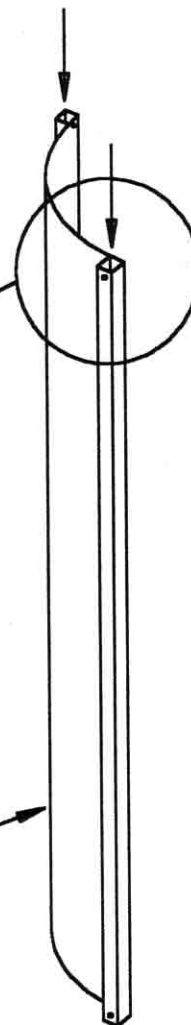
Step #3
 Insert Riv nuts in each handrail hole from outside of inner drum. Put each of the #10-32 screws 1 1/4" long through the holes in the handrail, then through long black plastic spacers and into each riv nut. Use 2 self tapping screws on ends of hand rail. Attaching them from outside inwards.

Step #4
 Insert each of the eight plastic spacers into square aluminum channel tube and align with hole.

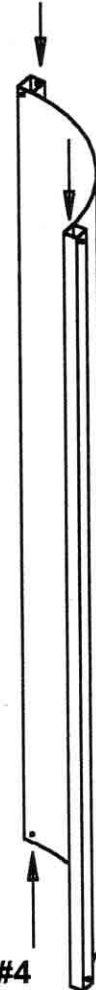


Step #4
 square aluminum channel tube

Step #4 square aluminum channel tube



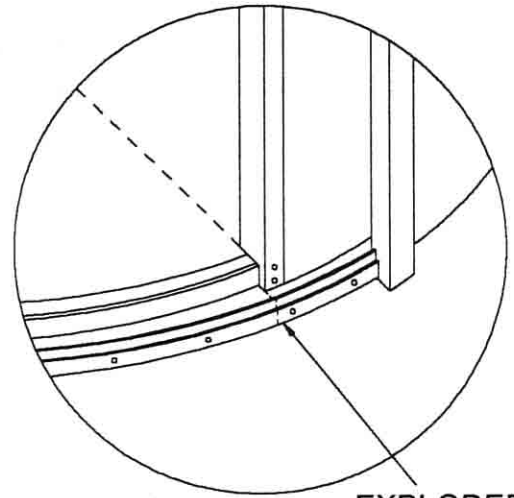
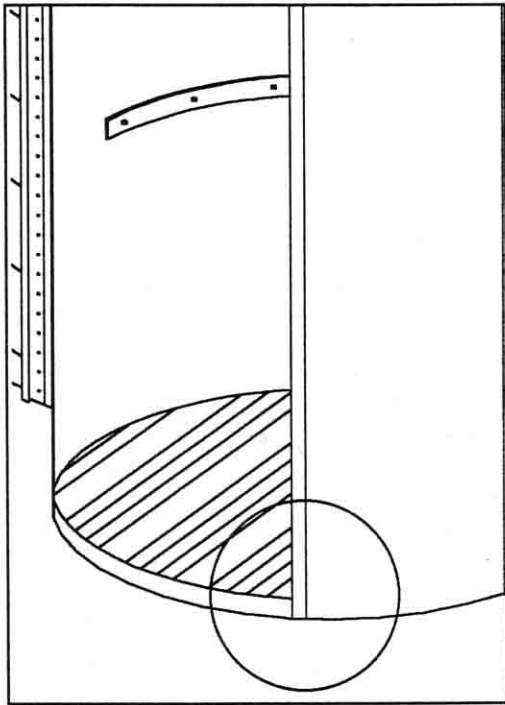
Step #4
 outside cylinder



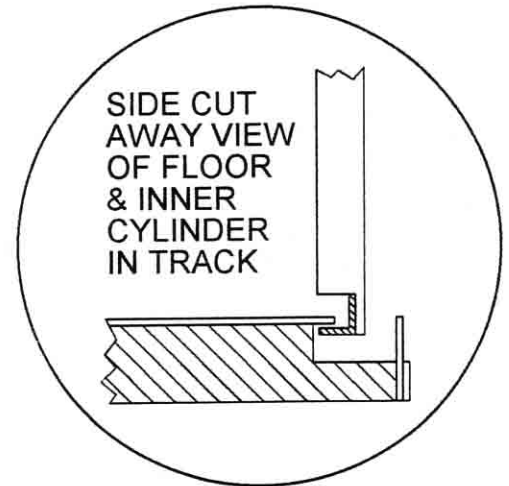
Step #4
 back side of square aluminum channel tube

Step #5

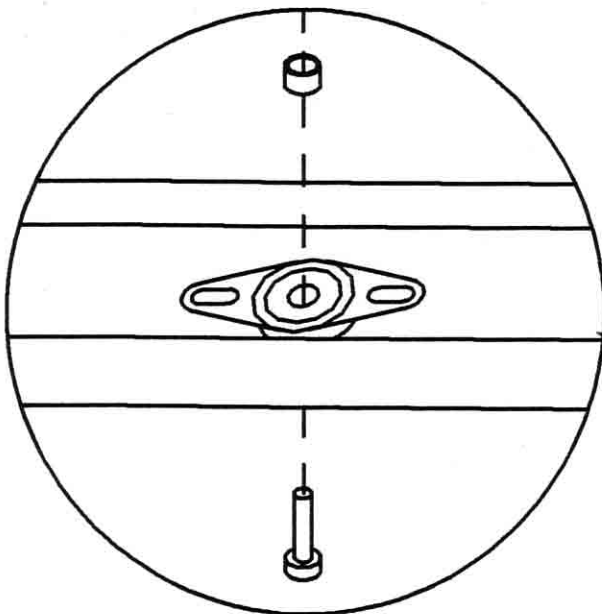
Stand the inside cylinder onto the wood platform of (1A) and place the top of (2A) on top of drum. Wrap ABS outer panel around inside cylinder. Start as indicated with 4 bolts on top, 4 bolts bottom, and the short screws in between.



EXPLODED VIEW FOR DETAIL

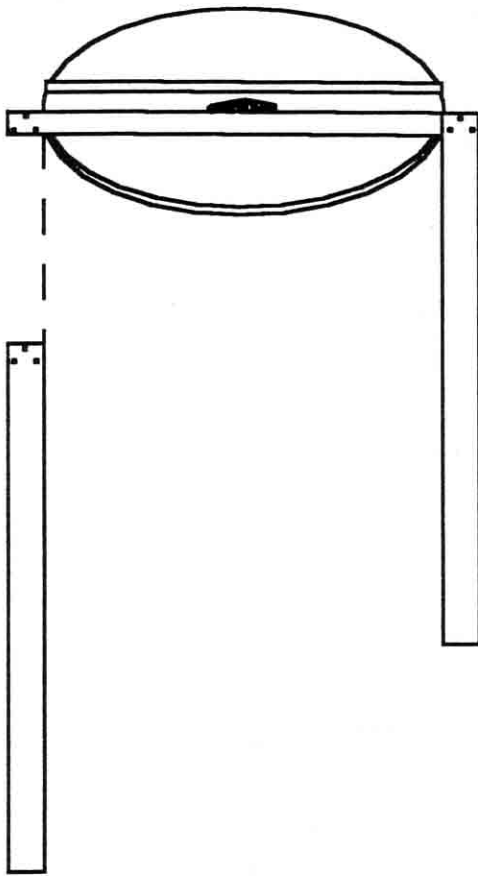


SIDE CUT AWAY VIEW OF FLOOR & INNER CYLINDER IN TRACK



Step #6

Insert the 1/2"x3"bolt up through the inside of the hole in the top of the inner cylinder then up through the suspension bearing and put the 1/2"jam nut on top. Adjust so inside cylinder turns freely.



Step #7

Attach left side rail at top of J channel with screw. Letting side rail hang, attach right side rail the same way. Put screws in bottom hole of side rail into bottom of door. Put remaining screws in from inside door to the out side.

